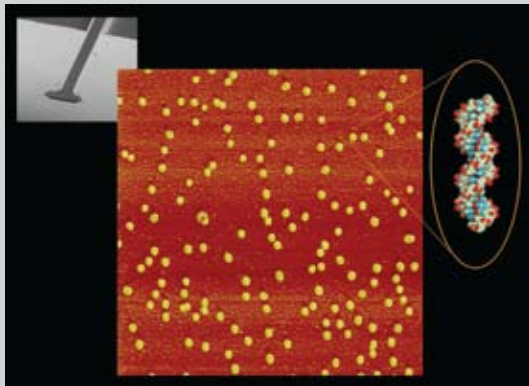


# ROWLAND JUNIOR

# FELLOWS PROGRAM

The Rowland Junior Fellows program provides young scientists the opportunity to perform independent experimental research for five years with full institutional support and access to the Institute's outstanding technical and scientific resources. The Rowland Institute has currently eight Junior Fellows. This fall, again candidates in all the natural sciences (physics, chemistry, biology,...) as well as in engineering will be considered, with special attention given to interdisciplinary work and to the development of new experimental methods.

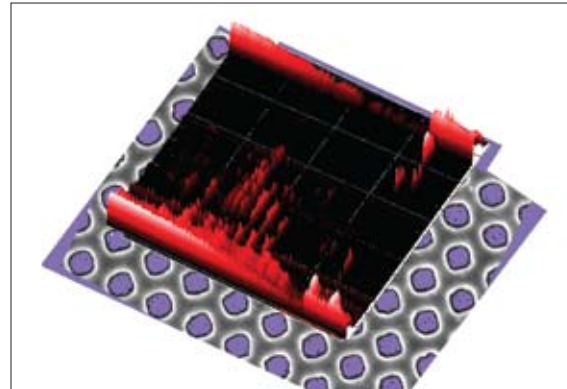
The Fellows will be selected for their scientific achievement, the creativity of their ideas, their resourcefulness as experiment- alists, and their ability to work independently.



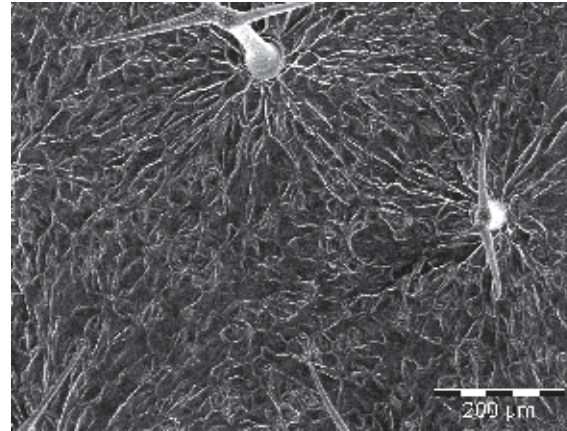
Unique molecular stiffness of hybridized DNA molecules measured by special micro-machined cantilevers, (top left) are used to detect individual hybridized molecules on a DNA microarray. Scan size is two microns (Sahin Lab)



\* Director of Electronics Engineering Winfield Hill



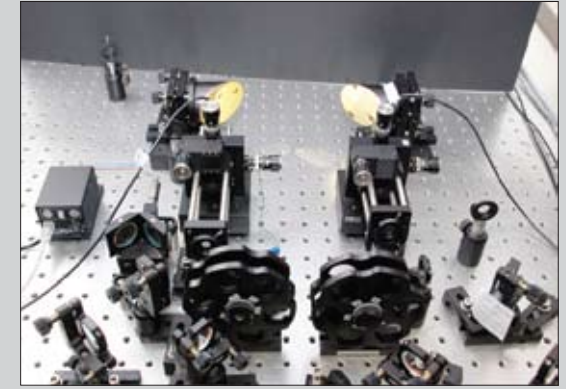
Anderson localization in disordered photonic crystal waveguides (Vollmer Lab)



Scanning electron micrograph of cuticular wax formations on the surface of *Arabidopsis thaliana* leaves. The Lewis lab is investigating how cuticular wax influences attachment rate in the parasitic plant *Cuscuta pentagona* (Lewis Lab)



\* Six-month-old hybrid poplar (*Populus tremula x alba*), a model species for the study of wood development, growing in the Institute's greenhouse (Spicer Lab)



\* Emitter and receiver for terahertz half cycle pulses (Speck Lab)

The appointment will be for a maximum of five years, with continuation past three years contingent on a favorable internal review. Although no rigorous restriction is placed on prior experience and career path, the typical new appointee will have just completed a Ph.D. or have up to two years postdoctoral experience.

The salary will depend on field and years of experience, but will be at least **\$58,000** a year.

Resources at the disposal of the Fellows include laboratory space, initial set-up costs, operating costs, the help of technicians and of a postdoc or student, and unlimited access to the Institute shops and services (mechanical, electronic, computer and information). The Fellows will have intellectual support from the Rowland Senior Fellows and from the members of the Harvard faculty. Applicants should send a **curriculum vitae**, a **one-page research proposal**, and have **three letters of reference** sent to:

Dr. Michael M. Burns  
Rowland Junior Fellows Program  
Rowland Institute at Harvard  
100 Edwin H. Land Boulevard  
Cambridge, MA 02142

The application deadline is: **November 30, 2007.**

Questions on the program should be directed to [rjf@rowland.harvard.edu](mailto:rjf@rowland.harvard.edu). Further information on the Rowland Institute can be found at <http://www.rowland.harvard.edu>.

Harvard University is an Affirmative Action/Equal Opportunity Employer.

\*Panoramic view of Boston taken from the Institute



\* Photograph of the Institute's atrium

Rowland Institute at Harvard  
100 Edwin H. Land Boulevard  
Cambridge, MA 02142

[www.rowland.harvard.edu](http://www.rowland.harvard.edu)

Cover Image:  
Microscopic particles that have coupled electric and magnetic dipole moments are used to make a soft-matter magneto-electric medium.  
(Symmetry and Chirality Group)

\*Photographs by J. M. Figueiredo

ROWLAND INSTITUTE AT HARVARD

ROWLAND  
JUNIOR FELLOWS  
PROGRAM



2008

